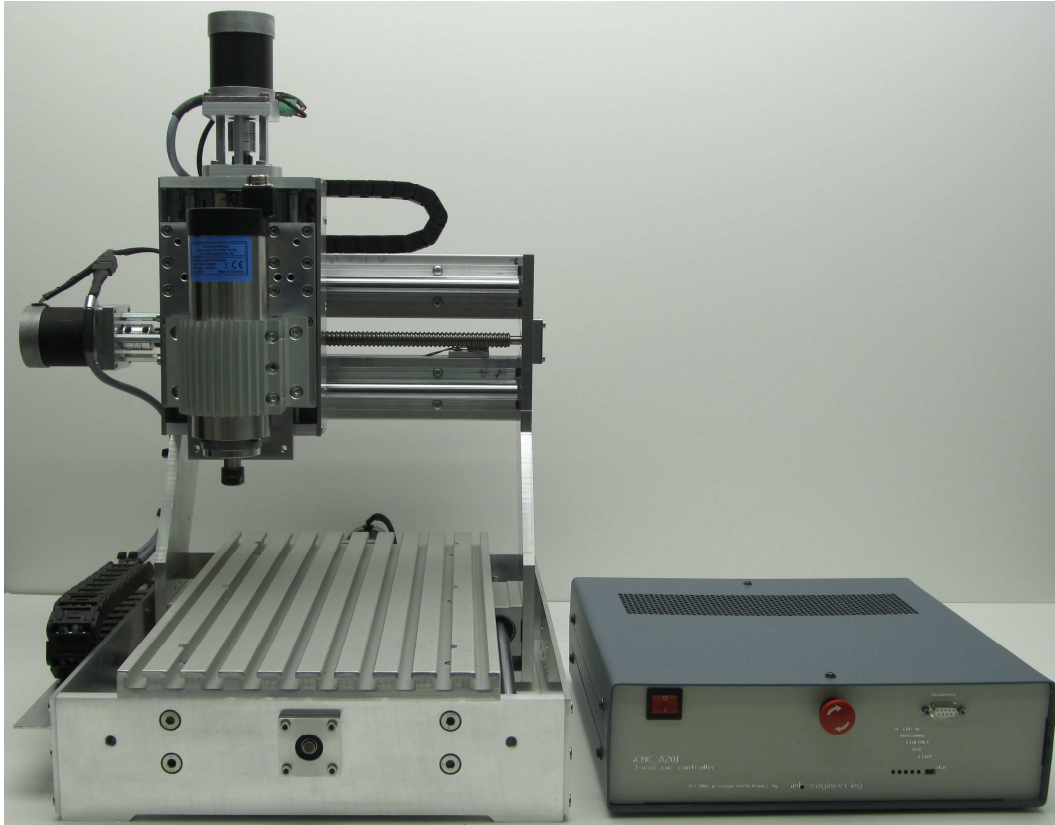


miniCNC-Portal Machine PM0302



Desktop-miniCNC-Portal-Maschine for **CNC-Education** and Training with **4-Axis-CNC-Controller** und **PC-Controlsoftware**. The CNC-control works with CAM-files in **G-Code** according to DIN 66025.

The structure of the machine is designed for machining of **non-ferrous-metals, wood and plastics in 2.5D und 3D**.

The use of a 4th **optional rotary axis** allows machining of volume bodies.

The machine is extremely well suited for **Modelmaking, fine Engraving works, PCB-Prototyping or Jewelry design**.

Our **Plug&Play** concept with coordinated system components - **machine - controller - software** - takes only a few steps to set up the machine system.

- software installation on the PC – connecting controller with machine – connecting controller with PC through USB-Port – Loading CAM-file – drive the machine

Software installation uses pre-configured machine parameter files, so machine is ready for use.

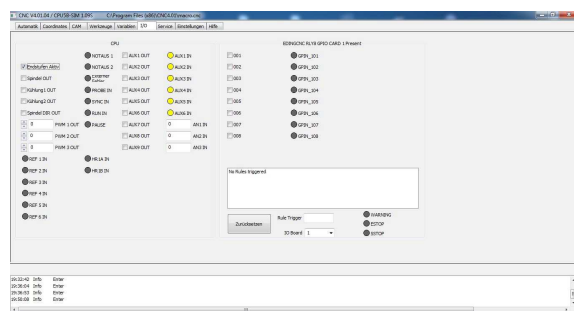
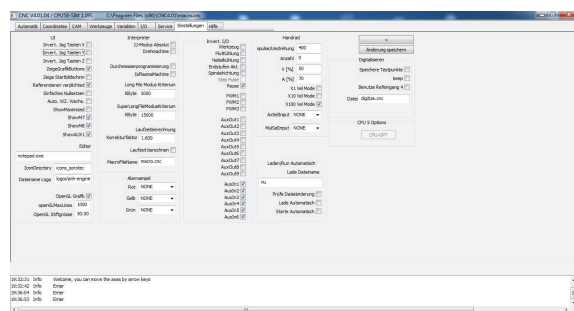
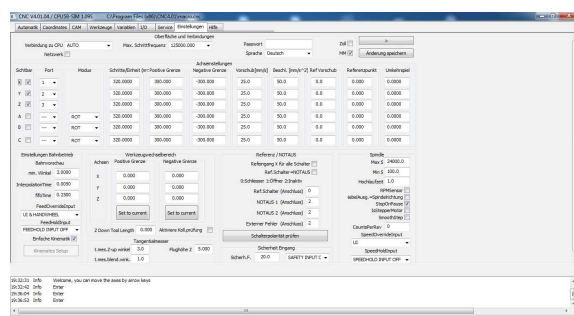
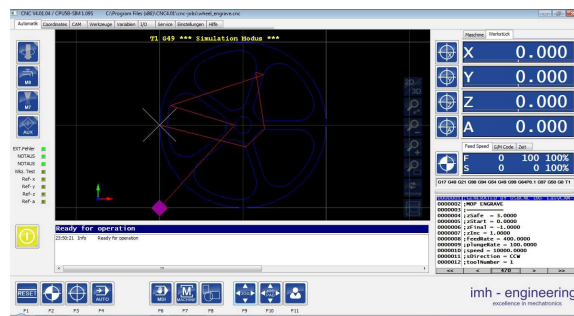
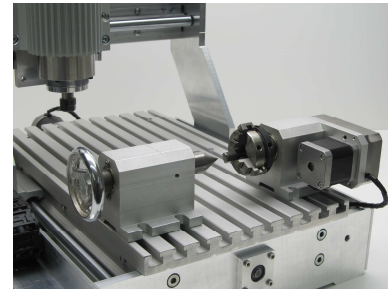
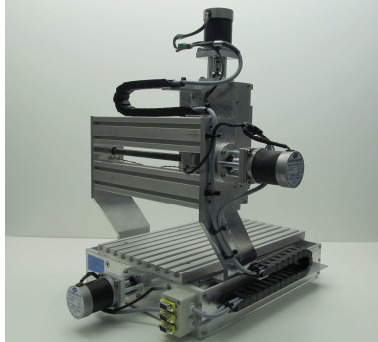
The PM-Series is offered in different models, which differ in length of axis travelling distance.

Machine type	PM0302	PM0504	PM0705
Table Size X x Y mm	425 x 250	650 x 500	900 x 750
Travel X x Y x Z mm	300 x 200 x 100	500 x 400 x 180	700 x 500 x 290
Aperture Z mm	115	190	300

The structure of the machine base is identical. Special size can be fabricated by request.

The machines are completely designed and **Made by imh-engineering in Germany.**

For production of our machines we use only industrial standard components of high quality from well-known producers. Thus we achieve high reliability, first-class precision and long life expectancy for the operation of our products.



[iCNC CSP404 Controller Datasheet](#)

[iCNC PM0302 Portal Mill Datasheet](#)

* Technical changes reserved

www.imh-engineering.de